

Plotted By: Mathew London Plot Date: 17/08/2023 Cad File: N:\240380\240380(2) - Forbes\DWG\Survey\DET\240380(2)-DET-001-B.dwg  
This plan includes coloured information. If you have a black and white copy you do not have all of the information. This note is coloured RED.

- (B) EASEMENT FOR TRANSMISSION LINE 30.48 WIDE - G.G.7.7.1961 FOL 2019  
(C) PROPOSED EASEMENT FOR TRANSMISSION LINE - G.G.7.7.1961 FOL 2019  
(D) PROPOSED EASEMENT FOR DRAINAGE OF SEWAGE (DP1180901)  
(E) RIGHT OF WAY AFFECTING THE WHOLE LOT (A1211168)

ver.	date	comment	surveyed	drawn	checked	pm	co-ordinate information	level information	scale (A1 original size)	page
A	18.05.2023	INITIAL ISSUE	K.R.	M.B.	D.K.	M.L.O	CO-ORDINATE SYSTEM: MGA2020 55	DATUM: AHD	0 50 100m	01 OF 14
B	17.08.2023	EASEMENT NOTE CORRECTION	K.R.	M.L.	M.L.	M.L.	ORIGIN OF CO-ORDINATES: P.M.27126 DATE OF SURVEY 21/04/2023	CONTOUR INTERVAL: 0.2m ORIGIN OF LEVELS: P.M.27126	SCALE: 1:1750 (FULL)	

• project management

• civil engineering

• infrastructure

• superintendency

• economic analysis

• social impact

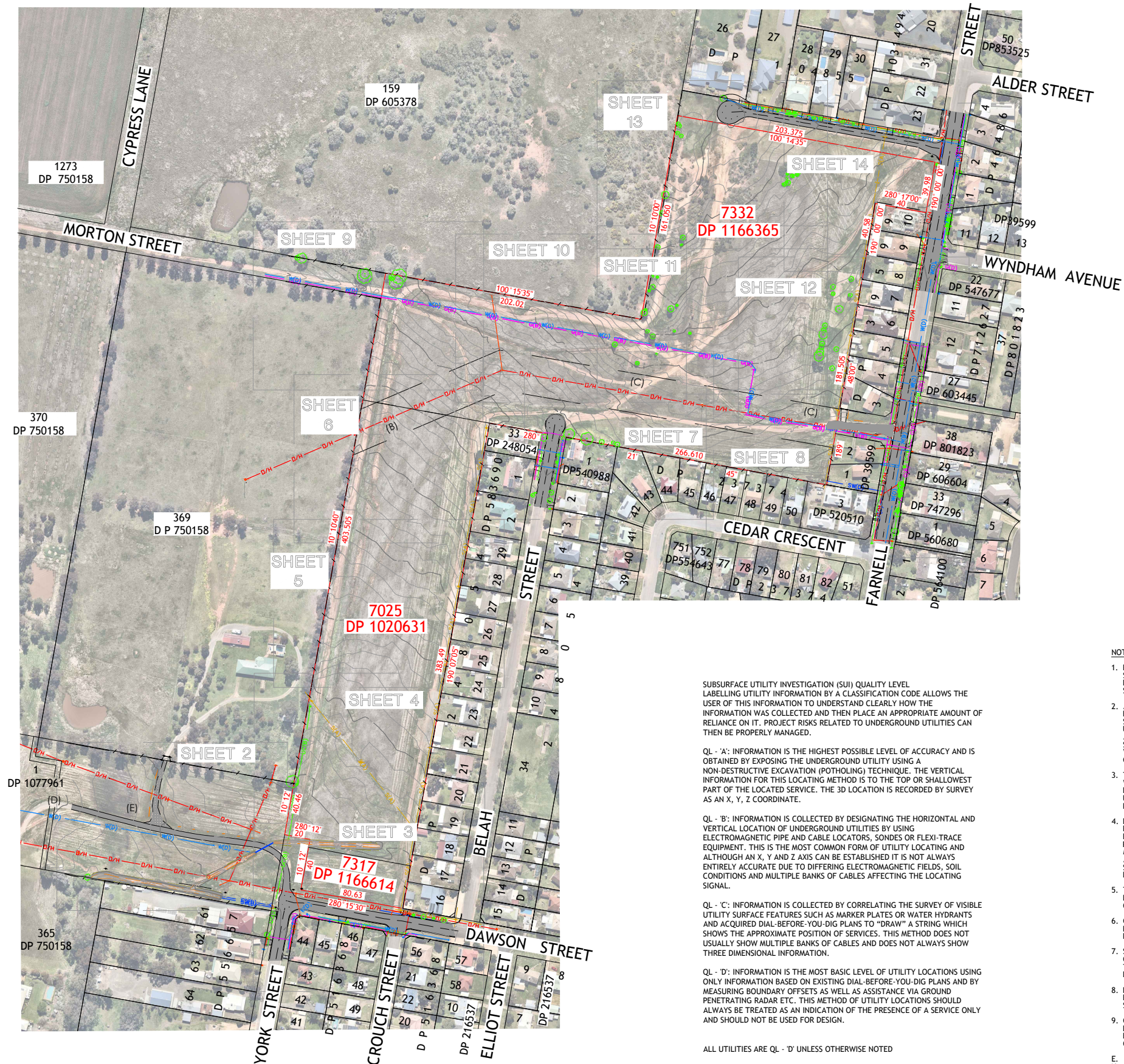
• town planning

• surveying

• development feasibility

• visualisation

• urban design



SUBSURFACE UTILITY INVESTIGATION (SUI) QUALITY LEVEL LABELLING UTILITY INFORMATION BY A CLASSIFICATION CODE ALLOWS THE USER OF THIS INFORMATION TO UNDERSTAND CLEARLY HOW THE INFORMATION WAS COLLECTED AND THEN PLACE AN APPROPRIATE AMOUNT OF RELIANCE ON IT. PROJECT RISKS RELATED TO UNDERGROUND UTILITIES CAN THEN BE PROPERLY MANAGED.

QL - 'A': INFORMATION IS THE HIGHEST POSSIBLE LEVEL OF ACCURACY AND IS OBTAINED BY EXPOSING THE UNDERGROUND UTILITY USING A NON-DESTRUCTIVE EXCAVATION (POTHOLING) TECHNIQUE. THE VERTICAL INFORMATION FOR THIS LOCATING METHOD IS TO THE TOP OR SHALLOWEST PART OF THE LOCATED SERVICE. THE 3D LOCATION IS RECORDED BY SURVEY AS AN X, Y, Z COORDINATE.

QL - 'B': INFORMATION IS COLLECTED BY DESIGNATING THE HORIZONTAL AND VERTICAL LOCATION OF UNDERGROUND UTILITIES BY USING ELECTROMAGNETIC PIPE AND CABLE LOCATORS, SONDES OR FLEXI-TRACE EQUIPMENT. THIS IS THE MOST COMMON FORM OF UTILITY LOCATING AND ALTHOUGH AN X, Y AND Z AXIS CAN BE ESTABLISHED IT IS NOT ALWAYS ENTIRELY ACCURATE DUE TO DIFFERING ELECTROMAGNETIC FIELDS, SOIL CONDITIONS AND MULTIPLE BANKS OF CABLES AFFECTING THE LOCATING SIGNAL.

QL - 'C': INFORMATION IS COLLECTED BY CORRELATING THE SURVEY OF VISIBLE UTILITY SURFACE FEATURES SUCH AS MARKER PLATES OR WATER HYDRANTS AND ACQUIRED DIAL-BEFORE-YOU-DIG PLANS TO "DRAW" A STRING WHICH SHOWS THE APPROXIMATE POSITION OF SERVICES. THIS METHOD DOES NOT USUALLY SHOW MULTIPLE BANKS OF CABLES AND DOES NOT ALWAYS SHOW THREE DIMENSIONAL INFORMATION.

QL - 'D': INFORMATION IS THE MOST BASIC LEVEL OF UTILITY LOCATIONS USING ONLY INFORMATION BASED ON EXISTING DIAL-BEFORE-YOU-DIG PLANS AND BY MEASURING BOUNDARY OFFSETS AS WELL AS ASSISTANCE VIA GROUND PENETRATING RADAR ETC. THIS METHOD OF UTILITY LOCATIONS SHOULD ALWAYS BE TREATED AS AN INDICATION OF THE PRESENCE OF A SERVICE ONLY AND SHOULD NOT BE USED FOR DESIGN.

ALL UTILITIES ARE QL - 'D' UNLESS OTHERWISE NOTED

#### LEGEND

- BDY
- BDY ADJOINING
- BDY DCDB
- BUILD FENCE
- BUILD GATE
- BUILD WALL
- COMMS MARKER
- COMMS PIT
- UNDERGROUND STORMWATER PIPE (QL C)
- DRAINAGE FLOW LINE
- DRAINAGE HEAD WALL
- DRAINAGE KERB INLET PIT
- DRAINAGE PIPE QL D
- DRAINAGE STORMWATER PIT
- EASE EXIST
- EASE NEW
- ELECTRICAL MARKER
- ELECTRICAL OVERHEAD ELECTRICITY
- ELECTRICAL PILLAR
- ELECTRICAL PIT
- ELECTRICAL POLE
- ELECTRICAL STAY POLE
- ELECTRICAL STAY WIRE
- ELECTRICAL STREET LIGHT
- GAS GROUND MARKER
- GAS MARKER POST
- ROAD BACK OF KERB
- ROAD CROWN
- ROAD DRIVEWAY
- ROAD EDGE OF BITUMEN
- ROAD EDGE OF CONCRETE
- ROAD EDGE OF GRAVEL
- ROAD LIP LINE
- ROAD SIGN
- ROAD TOP OF KERB
- SERV UGD COMMS CABLE QL B
- SERV UGD COMMS CABLE QL D
- SERV UGD ELECTRICAL CABLE QL B
- SERV UGD ELECTRICAL CABLE QL D
- SERV UGD GAS PIPE QL B
- SERV UGD GAS PIPE QL D
- SERV UGD MISC SERVICE QL A
- SERV UGD MISC SERVICE QL D
- SERV UGD SEWER PIPE QL A
- SERV UGD SEWER PIPE QL D
- SERV UGD WATER MAIN QL A
- SERV UGD WATER MAIN QL B
- SERV UGD WATER MAIN QL D
- SEWER MANHOLE
- TOPO BOTTOM OF BANK
- TOPO EDGE OF GARDEN
- TOPO SHRUB
- TOPO TOP OF BANK
- TOPO TREE
- WATER HYDRANT
- WATER METER
- WATER STOP VALVE

#### NOTES:-

- PLEASE REFER TO AS5488-2013 CLASSIFICATION OF SUBSURFACE UTILITY INVESTIGATION (SUI) FOR THE DEFINITION OF SERVICE LOCATION ACCURACIES SHOWN IN THIS PLAN.
- ALL UNDERGROUND UTILITIES SHOWN ON THIS PLAN HAVE BEEN LOCATED BY ELECTRONIC DETECTION, SITE INSPECTION AND/OR BY ESTIMATION BASED UPON SUPPLIED DBYD INFORMATION PLANS. ADDITIONAL SERVICES MAY EXIST THROUGHOUT THE SITE. TRUE LEVELS & POSITION WILL NEED TO BE VERIFIED BY POTHOLES BEFORE ANY CONSTRUCTION COMMENCES.
- THERE MAY BE OTHER EXISTING SERVICES LOCATED WITHIN THIS SITE THAT ARE BURIED OF WHICH THEIR LOCATION WAS UNKNOWN AT THE TIME OF UNDERTAKING THE SURVEY AND PREPARING THIS PLAN.
- DIMENSIONS SHOWN ON THIS PLAN ARE BASED ON PRELIMINARY BOUNDARY DEFINITION ONLY. ANY FUTURE PLAN OF SURVEY OF ADJOINING LOTS REGISTERED SUBSEQUENT TO THIS INITIAL SURVEY MAY IMPACT SUBJECT BOUNDARIES. ALL DIMENSIONS, AREAS AND EASEMENTS ARE SUBJECT TO FINAL SURVEY AND REGISTRATION OF THE PLAN WITH NSW LAND REGISTRY SERVICES.
- THIS PLAN HAS BEEN PREPARED FOR THE PURPOSE OF DESIGN AND SHOULD NOT BE USED FOR ANYTHING OTHER THAN THAT PURPOSE.
- CONTOURS SHOWN HEREON ARE FOR DESIGN PURPOSES ONLY AND ARE TO BE CONFIRMED ON SITE PRIOR TO ANY EXCAVATION OR CONSTRUCTION.
- SPOT LEVELS HAVE BEEN REMOVED FROM THE FACE OF THIS PLAN. SPOT LEVELS CAN BE ACCESSED ON THE ELECTRONIC COPY OF THIS PLAN FOR MORE DETAILED DESIGN WORKS.
- DIGITAL CADASTRAL DATABASE (DCDB) BOUNDARIES HAVE BEEN OBTAINED FROM NSW LAND REGISTRY SERVICES (LRS) AND ARE APPROXIMATELY ONLY.
- CO-ORDINATES SHOWN ON THIS DRAWING ARE DERIVED FROM A LOCALISED GROUND DISTANCE BASED GRID, ESTABLISHED FROM THE MGA CO-ORDINATES OF PM 27126.

E. 593592.818  
N. 6308120.831  
RL 257.796

drawing title:

DETAIL AND CONTOUR  
SURVEY UPON CROWN  
LAND LOTS

location: MORTON STREET,  
FORBES, 2871

council: FORBES SHIRE

dwg ref: 240380(2)-DET-001-B

client:



central coast office ph: (02) 4305 4300  
hunter office ph: (02) 4978 5100  
sydney office ph: (02) 8046 7411

www.adwjohanson.com.au



WARNING  
OPTICAL FIBRE  
IN AREA

WARNING  
UNDERGROUND  
ELECTRICITY LINES





Plotted By: Matthew London Plot Date: 17/08/2023 Cad File: N:\240380\240380(2) - Forbes\DWG\Survey\DET\240380(2)-DET-001-18.dwg  
This plan includes coloured information. If you have a black and white copy you do not have all of the information. This note is coloured RED.

REFER TO SHEET 1 FOR ALL RELEVANT SITE NOTES AND SERVICES CLASSIFICATIONS.

- LEGEND**
- BDY
  - BDY ADJOINING
  - BDY DCDB
  - BUILD FENCE
  - BUILD GATE
  - BUILD WALL
  - COMMS MARKER
  - COMMS PIT
  - UNDERGROUND STORMWATER PIPE (QL C)
  - DRAINAGE FLOW LINE
  - DRAINAGE HEAD WALL
  - DRAINAGE KERB INLET PIT
  - DRAINAGE PIPE QL D
  - DRAINAGE STORMWATER PIT
  - EASE EXIST
  - EASE NEW
  - ELECTRICAL MARKER
  - ELECTRICAL OVERHEAD ELECTRICITY
  - ELECTRICAL PILLAR
  - ELECTRICAL PIT
  - ELECTRICAL POLE
  - ELECTRICAL STAY POLE
  - ELECTRICAL STAY WIRE
  - ELECTRICAL STREET LIGHT
  - GAS GROUND MARKER
  - GAS MARKER POST
  - ROAD BACK OF KERB
  - ROAD CROWN
  - ROAD DRIVEWAY
  - ROAD EDGE OF BITUMEN
  - ROAD EDGE OF CONCRETE
  - ROAD EDGE OF GRAVEL
  - ROAD LIP LINE
  - ROAD SIGN
  - ROAD TOP OF KERB
  - SERV UGD COMMS CABLE QL B
  - SERV UGD COMMS CABLE QL D
  - SERV UGD ELECTRICAL CABLE QL B
  - SERV UGD ELECTRICAL CABLE QL D
  - SERV UGD GAS PIPE QL B
  - SERV UGD GAS PIPE QL D
  - SERV UGD MISC SERVICE QL A
  - SERV UGD MISC SERVICE QL D
  - SERV UGD SEWER PIPE QL A
  - SERV UGD SEWER PIPE QL D
  - SERV UGD WATER MAIN QL A
  - SERV UGD WATER MAIN QL B
  - SERV UGD WATER MAIN QL D
  - SEWER MANHOLE
  - TOPO BOTTOM OF BANK
  - TOPO EDGE OF GARDEN
  - TOPO SHRUB
  - TOPO TOP OF BANK
  - TOPO TREE
  - WATER HYDRANT
  - WATER METER
  - WATER STOP VALVE



ver.	date	comment	surveyed	drawn	checked	pm	co-ordinate information	level information	scale (A1 original size)	page
A	18.05.2023	INITIAL ISSUE	K.R.	M.L.	D.K.	M.L.O	CO-ORDINATE SYSTEM: MGA2020 55	DATUM: AHD	0 5.0 10.0 12.5m	02 OF 14
B	17.08.2023	EASEMENT NOTE CORRECTION	K.R.	M.L.	M.L.	M.L.	ORIGIN OF CO-ORDINATES: P.M.27126	CONTOUR INTERVAL: 0.2m	SCALE: 1:250 (FULL)	
							DATE OF SURVEY: 21/04/2023			



drawing title:  
DETAIL AND CONTOUR  
SURVEY UPON CROWN  
LAND LOTS

location: MORTON STREET,  
FORBES, 2871

council: FORBES SHIRE

dwg ref: 240380(2)-DET-001-B

client:



central coast office ph: (02) 4305 4300  
hunter office ph: (02) 4978 5100  
sydney office ph: (02) 8046 7411

www.adwjohanson.com.au



working beyond expectations



Plotted By: Matthew London Plot Date: 17/08/2023 Cad File: N:\240380\240380(2) - Forbes\DWG\Survey\DET\240380(2)-DET-001-18.dwg  
This plan includes coloured information. If you have a black and white copy you do not have all of the information. This note is coloured RED.

REFER TO SHEET 1 FOR ALL RELEVANT SITE NOTES AND SERVICES CLASSIFICATIONS.

ver.	date	comment	surveyed	drawn	checked	pm	co-ordinate information	level information	scale (A1 original size)	page
A	18.05.2023	INITIAL ISSUE	K.R.	M.B.	D.K.	M.L.O.	CO-ORDINATE SYSTEM: MGA2020 55	DATUM: AHD	0 5.0 10.0 12.5m	03 OF 14
B	17.08.2023	EASEMENT NOTE CORRECTION	K.R.	M.L.	M.L.	M.L.	ORIGIN OF CO-ORDINATES: P.M.27126 DATE OF SURVEY: 21/04/2023	CONTOUR INTERVAL: 0.2m ORIGIN OF LEVELS: P.M.27126	SCALE: 1:250 (FULL)	

• project management • civil engineering • infrastructure • superintendency • economic analysis • social impact • town planning • surveying • development feasibility • visualisation • urban design



drawing title:  
DETAIL AND CONTOUR  
SURVEY UPON CROWN  
LAND LOTS

location: MORTON STREET,  
FORBES, 2871

council: FORBES SHIRE

dwg ref: 240380(2)-DET-001-B

client:

central coast office ph: (02) 4305 4300  
hunter office ph: (02) 4978 5100  
sydney office ph: (02) 8046 7411  
www.adwjohnson.com.au

- LEGEND**
- BDY
  - BDY ADJOINING
  - BDY DCDB
  - BUILD FENCE
  - BUILD GATE
  - BUILD WALL
  - COMMS MARKER
  - COMMS PIT
  - UNDERGROUND STORMWATER PIPE (QL C)
  - DRAINAGE FLOW LINE
  - DRAINAGE HEAD WALL
  - DRAINAGE KERB INLET PIT
  - DRAINAGE PIPE QL D
  - DRAINAGE STORMWATER PIT
  - EASE EXIST
  - EASE NEW
  - ELECTRICAL MARKER
  - ELECTRICAL OVERHEAD ELECTRICITY
  - ELECTRICAL PILLAR
  - ELECTRICAL PIT
  - ELECTRICAL POLE
  - ELECTRICAL STAY POLE
  - ELECTRICAL STAY WIRE
  - ELECTRICAL STREET LIGHT
  - GAS GROUND MARKER
  - GAS MARKER POST
  - ROAD BACK OF KERB
  - ROAD CROWN
  - ROAD DRIVEWAY
  - ROAD EDGE OF BITUMEN
  - ROAD EDGE OF CONCRETE
  - ROAD EDGE OF GRAVEL
  - ROAD LIP LINE
  - ROAD SIGN
  - ROAD TOP OF KERB
  - SERV UGD COMMS CABLE QL B
  - SERV UGD COMMS CABLE QL D
  - SERV UGD ELECTRICAL CABLE QL B
  - SERV UGD ELECTRICAL CABLE QL D
  - SERV UGD GAS PIPE QL B
  - SERV UGD GAS PIPE QL D
  - SERV UGD MISC SERVICE QL A
  - SERV UGD MISC SERVICE QL D
  - SERV UGD SEWER PIPE QL A
  - SERV UGD SEWER PIPE QL D
  - SERV UGD WATER MAIN QL A
  - SERV UGD WATER MAIN QL B
  - SERV UGD WATER MAIN QL D
  - SEWER MANHOLE
  - TOPO BOTTOM OF BANK
  - TOPO EDGE OF GARDEN
  - TOPO SHRUB
  - TOPO TOP OF BANK
  - TOPO TREE
  - WATER HYDRANT
  - WATER METER
  - WATER STOP VALVE



working beyond expectations







Plotted By: Matthew London Plot Date: 17/08/2023 Cad File: N:\240380\240380(2) - Forbes\DWG\Survey\DET\240380(2)-DET-001-B.dwg  
This plan includes coloured information. If you have a black and white copy you do not have all of the information. This note is coloured RED.

REFER TO SHEET 1 FOR ALL RELEVANT SITE NOTES AND SERVICES CLASSIFICATIONS.

ver.	date	comment	surveyed	drawn	checked	pm	co-ordinate information	level information	scale (A1 original size)	page
A	18.05.2023	INITIAL ISSUE	K.R.	M.B.	D.K.	M.L.O	CO-ORDINATE SYSTEM: MGA2020 55	DATUM: AHD	0 5.0 10.0 12.5m	(5 OF 14)
B	17.08.2023	EASEMENT NOTE CORRECTION	K.R.	M.L.	M.L.	M.L.	ORIGIN OF CO-ORDINATES: P.M.27126	CONTOUR INTERVAL: 0.2m	SCALE: 1:250 (FULL)	
							DATE OF SURVEY: 21/04/2023			

• project management

• civil engineering

• infrastructure

• superintendency

• economic analysis

• social impact

• town planning

• surveying

• development feasibility

• visualisation

• urban design

- N

cadw/johnson
- LEGEND

BDY

BDY ADJOINING

BDY DCDB

BUILD FENCE

BUILD GATE

BUILD WALL

COMMS MARKER

COMMS PIT

UNDERGROUND STORMWATER PIPE (QL C)

DRAINAGE FLOW LINE

DRAINAGE HEAD WALL

DRAINAGE KERB INLET PIT

DRAINAGE PIPE QL D

DRAINAGE STORMWATER PIT

EASE EXIST

EASE NEW

ELECTRICAL MARKER

ELECTRICAL OVERHEAD ELECTRICITY

ELECTRICAL PILLAR

ELECTRICAL PIT

ELECTRICAL POLE

ELECTRICAL STAY POLE

ELECTRICAL STAY WIRE

ELECTRICAL STREET LIGHT

GAS GROUND MARKER

GAS MARKER POST

ROAD BACK OF KERB

ROAD CROWN

ROAD DRIVEWAY

ROAD EDGE OF BITUMEN

ROAD EDGE OF CONCRETE

ROAD EDGE OF GRAVEL

ROAD LIP LINE

ROAD SIGN

ROAD TOP OF KERB

SERV UGD COMMS CABLE QL B

SERV UGD COMMS CABLE QL D

SERV UGD ELECTRICAL CABLE QL B

SERV UGD ELECTRICAL CABLE QL D

SERV UGD GAS PIPE QL B

SERV UGD GAS PIPE QL D

SERV UGD MISC SERVICE QL A

SERV UGD MISC SERVICE QL D

SERV UGD SEWER PIPE QL A

SERV UGD SEWER PIPE QL D

SERV UGD WATER MAIN QL A

SERV UGD WATER MAIN QL B

SERV UGD WATER MAIN QL D

SEWER MANHOLE

TOPO BOTTOM OF BANK

TOPO EDGE OF GARDEN

TOPO SHRUB

TOPO TOP OF BANK

TOPO TREE

WATER HYDRANT

WATER METER

WATER STOP VALVE



drawing title:

DETAIL AND CONTOUR SURVEY UPON CROWN LAND LOTS

location:

MORTON STREET, FORBES, 2871

council:

FORBES SHIRE

dwg ref:

240380(2)-DET-001-B

client:

NSW GOVERNMENT

Land and Housing Corporation

adw johnson

central coast office

ph: (02) 4305 4300

hunter office

ph: (02) 4978 5100

sydney office

ph: (02) 8046 7411

www.adwjohanson.com.au

"Copyright Notice" This plan and the information it contains are copyright and remain the property of ADW Johnson Pty Ltd. ADW Johnson Pty Ltd grants to the client named on this plan a license to use the information hereon for the purpose for which we were engaged to perform the work. Use of the plan and information it contains for any other purpose is not permitted unless prior written approval has been obtained from ADW Johnson Pty Ltd.



Plotted By: Matthew London Plot Date: 17/08/2023 Cad File: N:\240380\240380(2) - Forbes\DWG\Survey\DET\240380(2)-DET-001-B.dwg  
This plan includes coloured information. If you have a black and white copy you do not have all of the information. This note is coloured RED.



LEGEND

- BDY
- BDY ADJOINING
- BDY DCDB
- BUILD FENCE
- BUILD GATE
- BUILD WALL
- CHK COMMS MARKER
- TEL COMMS PIT
- UNDERGROUND STORMWATER PIPE (QL C)
- DRAINAGE FLOW LINE
- DRAINAGE HEAD WALL
- DRAINAGE KERB INLET PIT
- DRAINAGE PIPE QL D
- DRAINAGE STORMWATER PIT
- EASE EXIST
- EASE NEW
- EMK ELECTRICAL MARKER
- D/H ELECTRICAL OVERHEAD ELECTRICITY
- EP ELECTRICAL PILLAR
- EPIT ELECTRICAL PIT
- PP ELECTRICAL POLE
- STAY ELECTRICAL STAY POLE
- STAY ELECTRICAL STAY WIRE
- SL ELECTRICAL STREET LIGHT
- MK GAS GROUND MARKER
- MK GAS MARKER POST
- ROAD BACK OF KERB
- ROAD CROWN
- ROAD DRIVEWAY
- ROAD EDGE OF BITUMEN
- ROAD EDGE OF CONCRETE
- ROAD EDGE OF GRAVEL
- ROAD LIP LINE
- SI ROAD SIGN
- ROAD TOP OF KERB
- U(B) SERV UGD COMMS CABLE QL B
- U(D) SERV UGD COMMS CABLE QL D
- E(B) SERV UGD ELECTRICAL CABLE QL B
- E(D) SERV UGD ELECTRICAL CABLE QL D
- G(B) SERV UGD GAS PIPE QL B
- G(D) SERV UGD GAS PIPE QL D
- W(A) SERV UGD MISC SERVICE QL A
- W(D) SERV UGD MISC SERVICE QL D
- S(A) SERV UGD SEWER PIPE QL A
- S(D) SERV UGD SEWER PIPE QL D
- W(A) SERV UGD WATER MAIN QL A
- W(B) SERV UGD WATER MAIN QL B
- W(D) SERV UGD WATER MAIN QL D
- SMH SEWER MANHOLE
- TOPO BOTTOM OF BANK
- TOPO EDGE OF GARDEN
- TOPO SHRUB
- TOPO TOP OF BANK
- TOPO TREE
- HYD WATER HYDRANT
- WM WATER METER
- SV WATER STOP VALVE

REFER TO SHEET 1 FOR ALL RELEVANT SITE NOTES AND SERVICES CLASSIFICATIONS.

- (B) EASEMENT FOR TRANSMISSION LINE 30.48 WIDE - G.G.7.7.1961 FOL 2019  
(C) PROPOSED EASEMENT FOR TRANSMISSION LINE - G.G.7.7.1961 FOL 2019

ver.	date	comment	surveyed	drawn	checked	pm	co-ordinate information	level information	scale (A1 original size)	page
A	18.05.2023	INITIAL ISSUE	K.R.	M.B.	D.K.	M.L.O	CO-ORDINATE SYSTEM: MGA2020 55	DATUM: AHD	0 5.0 10.0 12.5m	06 OF 14
B	17.08.2023	EASEMENT NOTE CORRECTION	K.R.	M.L.	M.L.	M.L.	ORIGIN OF CO-ORDINATES: P.M.27126 DATE OF SURVEY 21/04/2023	CONTOUR INTERVAL: 0.2m ORIGIN OF LEVELS: P.M.27126	SCALE: 1:250 (FULL)	

• project management • civil engineering • infrastructure • superintendency • economic analysis • social impact • town planning • surveying • development feasibility • visualisation • urban design



drawing title:  
DETAIL AND CONTOUR  
SURVEY UPON CROWN  
LAND LOTS

location: MORTON STREET,  
FORBES, 2871

council: FORBES SHIRE

dwg ref: 240380(2)-DET-001-B

client:



central coast office ph: (02) 4305 4300  
hunter office ph: (02) 4978 5100  
sydney office ph: (02) 8046 7411

www.adwjohanson.com.au




working beyond expectations



Plotted By: Mathew London Plot Date: 17/08/2023 Cod File: N:\240380\240380(2) - Forbes\DWG\Survey\DET\240380(2)-DET-001-18.dwg  
This plan includes coloured information. If you have a black and white copy you do not have all of the information. This note is coloured red.

REFER TO SHEET 1 FOR ALL RELEVANT SITE NOTES AND SERVICES CLASSIFICATIONS.

(B) EASEMENT FOR TRANSMISSION LINE 30.48 WIDE - G.G.7.7.1961 FOL 2019  
(C) PROPOSED EASEMENT FOR TRANSMISSION LINE - G.G.7.7.1961 FOL 2019

ver.	date	comment	surveyed	drawn	checked	pm	co-ordinate information	level information	scale (A1 original size)	page
A	18.05.2023	INITIAL ISSUE	K.R.	M.B.	D.K.	M.L.O	CO-ORDINATE SYSTEM: MGA2020 55	DATUM: AHD		(7 OF 14)
B	17.08.2023	EASEMENT NOTE CORRECTION	K.R.	M.L.	M.L.	M.L.	ORIGIN OF CO-ORDINATES: P.M.27126	CONTOUR INTERVAL: 0.2m		
							DATE OF SURVEY: 21/04/2023			

• project management • civil engineering • infrastructure • superintendency • economic analysis • social impact • town planning • surveying • development feasibility • visualisation • urban design



drawing title:  
DETAIL AND CONTOUR  
SURVEY UPON CROWN  
LAND LOTS

location: MORTON STREET,  
FORBES, 2871

council: FORBES SHIRE

dwg ref: 240380(2)-DET-001-B

client:



central coast office ph: (02) 4305 4300  
hunter office ph: (02) 4978 5100  
sydney office ph: (02) 8046 7411

www.adwjohanson.com.au

working beyond expectations



Plotted By: Matthew London Plot Date: 17/08/2023 Cad File: N:\240380\240380(2) - Forbes\DWG\Survey\DET\240380(2)-DET-001-B.dwg  
This plan includes coloured information. If you have a black and white copy you do not have all of the information. This note is coloured RED.

REFER TO SHEET 1 FOR ALL RELEVANT SITE NOTES AND SERVICES CLASSIFICATIONS.

(B) EASEMENT FOR TRANSMISSION LINE 30.48 WIDE - G.G.7.7.1961 FOL 2019  
(C) PROPOSED EASEMENT FOR TRANSMISSION LINE - G.G.7.7.1961 FOL 2019

ver.	date	comment	surveyed	drawn	checked	pm	co-ordinate information	level information	scale (A1 original size)	page
A	18.05.2023	INITIAL ISSUE	K.R.	M.B.	D.K.	M.L.O	CO-ORDINATE SYSTEM: MGA2020 55	DATUM: AHD	0 5.0 10.0 12.5m	(8 OF 14)
B	17.08.2023	EASEMENT NOTE CORRECTION	K.R.	M.L.	M.L.	M.L.	ORIGIN OF CO-ORDINATES: P.M.27126	ORIGIN OF LEVELS: P.M.27126	SCALE: 1:250 (FULL)	
							DATE OF SURVEY: 21/04/2023	CONTOUR INTERVAL: 0.2m		

• project management • civil engineering • infrastructure • superintendency • economic analysis • social impact • town planning • surveying • development feasibility • visualisation • urban design



drawing title:  
DETAIL AND CONTOUR  
SURVEY UPON CROWN  
LAND LOTS

location: MORTON STREET,  
FORBES, 2871

council: FORBES SHIRE

dwg ref: 240380(2)-DET-001-B

client:



central coast office ph: (02) 4305 4300  
hunter office ph: (02) 4978 5100  
sydney office ph: (02) 8046 7411

www.adwjohanson.com.au

working beyond expectations



Plotted By: Matthew London Plot Date: 17/08/2023 Cod File: N:\240380\240380(2) - Forbes\DWG\Survey\DET\240380(2)-DET-001-B.dwg  
This plan includes coloured information. If you have a black and white copy you do not have all of the information. This note is coloured RED.

REFER TO SHEET 1 FOR ALL RELEVANT SITE NOTES AND SERVICES CLASSIFICATIONS.

(B) EASEMENT FOR TRANSMISSION LINE 30.48 WIDE - G.G.7.7.1961 FOL 2019  
(C) PROPOSED EASEMENT FOR TRANSMISSION LINE - G.G.7.7.1961 FOL 2019

ver.	date	comment	surveyed	drawn	checked	pm	co-ordinate information	level information	scale (A1 original size)	page
A	18.05.2023	INITIAL ISSUE	K.R.	M.B.	D.K.	M.L.O	CO-ORDINATE SYSTEM: MGA2020 55	DATUM: AHD	0 5.0 10.0 12.5m	(9 OF 14)
B	17.08.2023	EASEMENT NOTE CORRECTION	K.R.	M.L.	M.L.	M.L.	ORIGIN OF CO-ORDINATES: P.M.27126	CONTOUR INTERVAL: 0.2m	SCALE: 1:250 (FULL)	
							DATE OF SURVEY: 21/04/2023			

• project management • civil engineering • infrastructure • superintendency • economic analysis • social impact • town planning • surveying • development feasibility • visualisation • urban design



drawing title:  
DETAIL AND CONTOUR  
SURVEY UPON CROWN  
LAND LOTS

location: MORTON STREET,  
FORBES, 2871

council: FORBES SHIRE

dwg ref: 240380(2)-DET-001-B

client:



central coast office ph: (02) 4305 4300  
hunter office ph: (02) 4978 5100  
sydney office ph: (02) 8046 7411

www.adwjohanson.com.au

working beyond expectations



Plotted By: Matthew London Plot Date: 17/08/2023 Cod File: N:\240380\240380(2) - Forbes\DWG\Survey\DET\240380(2)-DET-001-B.dwg  
This plan includes coloured information. If you have a black and white copy you do not have all of the information. This note is coloured RED.

REFER TO SHEET 1 FOR ALL RELEVANT SITE NOTES AND SERVICES CLASSIFICATIONS.

(B) EASEMENT FOR TRANSMISSION LINE 30.48 WIDE - G.G.7.7.1961 FOL 2019  
(C) PROPOSED EASEMENT FOR TRANSMISSION LINE - G.G.7.7.1961 FOL 2019

ver.	date	comment	surveyed	drawn	checked	pm	co-ordinate information	level information	scale (A1 original size)	page
A	18.05.2023	INITIAL ISSUE	K.R.	M.B.	D.K.	M.L.O	CO-ORDINATE SYSTEM: MGA2020 55	DATUM: AHD	0 5.0 10.0 12.5m	10 OF 14
B	17.08.2023	EASEMENT NOTE CORRECTION	K.R.	M.L.	M.L.	M.L.	ORIGIN OF CO-ORDINATES: P.M.27126	ORIGIN OF LEVELS: P.M.27126	SCALE: 1:250 (FULL)	
							DATE OF SURVEY: 21/04/2023	CONTOUR INTERVAL: 0.2m		

• project management • civil engineering • infrastructure • superintendency • economic analysis • social impact • town planning • surveying • development feasibility • visualisation • urban design



drawing title:  
DETAIL AND CONTOUR  
SURVEY UPON CROWN  
LAND LOTS

location: MORTON STREET,  
FORBES, 2871

council: FORBES SHIRE

dwg ref: 240380(2)-DET-001-B

client:



central coast office ph: (02) 4305 4300  
hunter office ph: (02) 4978 5100  
sydney office ph: (02) 8046 7411

www.adwjohanson.com.au

working beyond expectations



Plotted By: Mathew London Plot Date: 17/08/2023 Cad File: N:\240380\240380(2) - Forbes\DWG\Survey\DET\240380(2)-DET-001-B.dwg  
This plan includes coloured information. If you have a black and white copy you do not have all of the information. This note is coloured RED.

REFER TO SHEET 1 FOR ALL RELEVANT SITE NOTES AND SERVICES CLASSIFICATIONS.

(B) EASEMENT FOR TRANSMISSION LINE 30.48 WIDE - G.G.7.7.1961 FOL 2019  
(C) PROPOSED EASEMENT FOR TRANSMISSION LINE - G.G.7.7.1961 FOL 2019

ver.	date	comment	surveyed	drawn	checked	pm	co-ordinate information	level information	scale (A1 original size)	page
A	18.05.2023	INITIAL ISSUE	K.R.	M.B.	D.K.	M.L.O	CO-ORDINATE SYSTEM: MGA2020 55	DATUM: AHD	0 5.0 10.0 12.5m	11 OF 14
B	17.08.2023	EASEMENT NOTE CORRECTION	K.R.	M.L.	M.L.	M.L.	ORIGIN OF CO-ORDINATES: P.M.27126	ORIGIN OF LEVELS: P.M.27126	SCALE: 1:250 (FULL)	
							DATE OF SURVEY: 21/04/2023	CONTOUR INTERVAL: 0.2m		

• project management • civil engineering • infrastructure • superintendency • economic analysis • social impact • town planning • surveying • development feasibility • visualisation • urban design



drawing title:  
DETAIL AND CONTOUR  
SURVEY UPON CROWN  
LAND LOTS

location: MORTON STREET,  
FORBES, 2871

council: FORBES SHIRE

dwg ref: 240380(2)-DET-001-B

client:



central coast office ph: (02) 4305 4300  
hunter office ph: (02) 4978 5100  
sydney office ph: (02) 8046 7411

www.adwjohanson.com.au

working beyond expectations



Plotted By: Mathew London Plot Date: 17/08/2023 Cad File: N:\240380\240380(2) - Forbes\DWG\Survey\DET\240380(2)-DET-001-18.dwg  
This plan includes coloured information. If you have a black and white copy you do not have all the information. This note is coloured red.

REFER TO SHEET 1 FOR ALL RELEVANT SITE NOTES AND SERVICES CLASSIFICATIONS.

(B) EASEMENT FOR TRANSMISSION LINE 30.48 WIDE - G.G.7.7.1961 FOL 2019  
(C) PROPOSED EASEMENT FOR TRANSMISSION LINE - G.G.7.7.1961 FOL 2019

ver.	date	comment	surveyed	drawn	checked	pm	co-ordinate information	level information	scale (A1 original size)	page
A	18.05.2023	INITIAL ISSUE	K.R.	M.B.	D.K.	M.L.O	CO-ORDINATE SYSTEM: MGA2020 55	DATUM: AHD	0 5.0 10.0 12.5m	12 OF 14
B	17.08.2023	EASEMENT NOTE CORRECTION	K.R.	M.L.	M.L.	M.L.	ORIGIN OF CO-ORDINATES: P.M.27126	ORIGIN OF LEVELS: P.M.27126	SCALE: 1:250 (FULL)	
							DATE OF SURVEY: 21/04/2023	CONTOUR INTERVAL: 0.2m		

• project management • civil engineering • infrastructure • superintendency • economic analysis • social impact • town planning • surveying • development feasibility • visualisation • urban design



drawing title:  
DETAIL AND CONTOUR  
SURVEY UPON CROWN  
LAND LOTS

location: MORTON STREET,  
FORBES, 2871

council: FORBES SHIRE

dwg ref: 240380(2)-DET-001-B

client:



central coast office ph: (02) 4305 4300  
hunter office ph: (02) 4978 5100  
sydney office ph: (02) 8046 7411

www.adwjohanson.com.au

working beyond expectations



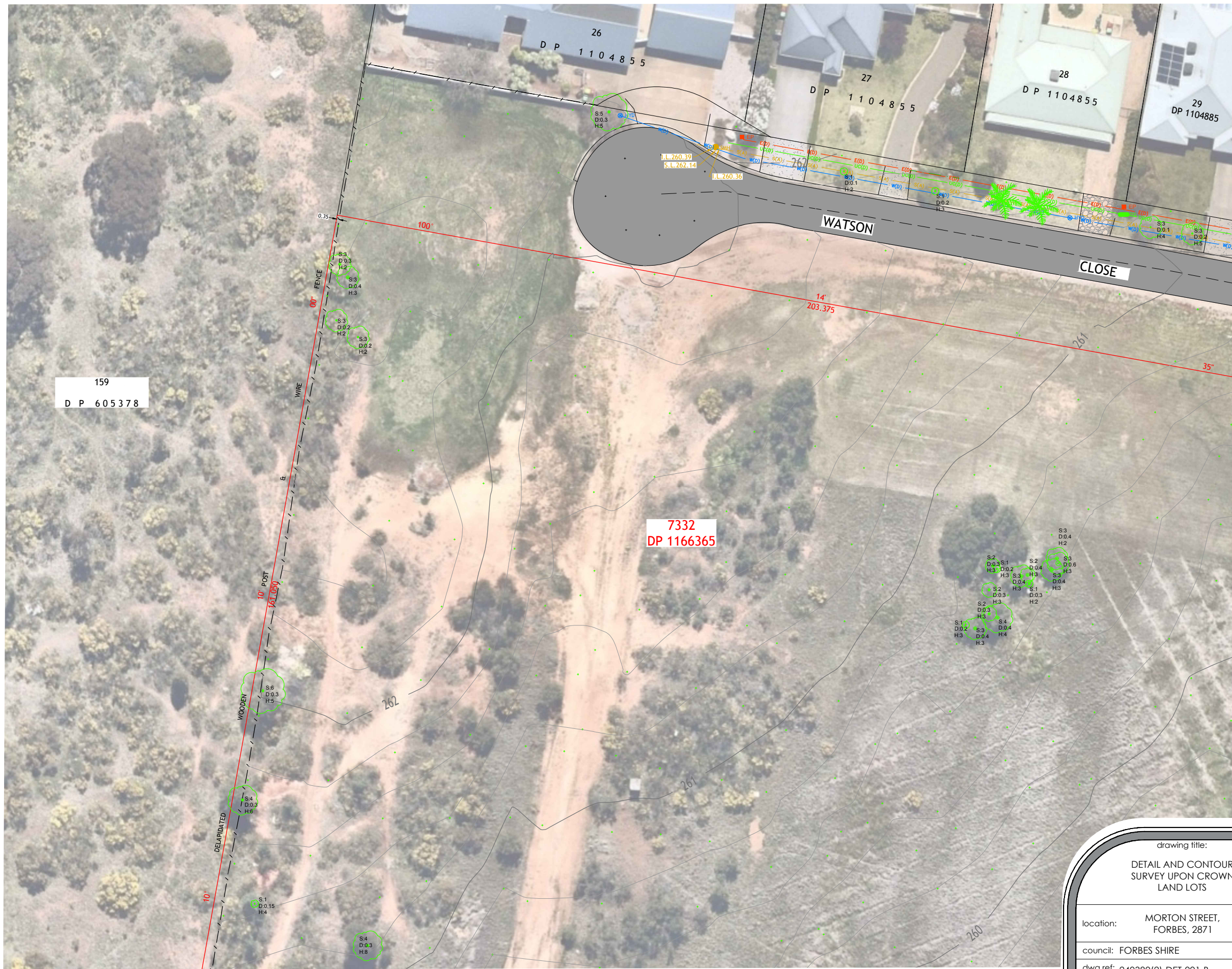
Plotted By: Matthew London Plot Date: 17/08/2023 Cad File: N:\240380\240380(2) - Forbes\DWG\Survey\DET\240380(2)-DET-001-18.dwg  
This plan includes coloured information. If you have a black and white copy you do not have all of the information. This note is coloured RED.



LEGEND

- BDY
- BDY ADJOINING
- BDY DCDB
- BUILD FENCE
- BUILD GATE
- BUILD WALL
- COMMS MARKER
- COMMS PIT
- UNDERGROUND STORMWATER PIPE (QL C)
- DRAINAGE FLOW LINE
- DRAINAGE HEAD WALL
- DRAINAGE KERB INLET PIT
- DRAINAGE PIPE QL D
- DRAINAGE STORMWATER PIT
- EASE EXIST
- EASE NEW
- ELECTRICAL MARKER
- ELECTRICAL OVERHEAD ELECTRICITY
- ELECTRICAL PILLAR
- ELECTRICAL PIT
- ELECTRICAL POLE
- ELECTRICAL STAY POLE
- ELECTRICAL STAY WIRE
- ELECTRICAL STREET LIGHT
- GAS GROUND MARKER
- GAS MARKER POST
- ROAD BACK OF KERB
- ROAD CROWN
- ROAD DRIVEWAY
- ROAD EDGE OF BITUMEN
- ROAD EDGE OF CONCRETE
- ROAD EDGE OF GRAVEL
- ROAD LIP LINE
- ROAD SIGN
- ROAD TOP OF KERB
- SERV UGD COMMS CABLE QL B
- SERV UGD COMMS CABLE QL D
- SERV UGD ELECTRICAL CABLE QL B
- SERV UGD ELECTRICAL CABLE QL D
- SERV UGD GAS PIPE QL B
- SERV UGD GAS PIPE QL D
- SERV UGD MISC SERVICE QL A
- SERV UGD MISC SERVICE QL D
- SERV UGD SEWER PIPE QL A
- SERV UGD SEWER PIPE QL D
- SERV UGD WATER MAIN QL A
- SERV UGD WATER MAIN QL B
- SERV UGD WATER MAIN QL D
- SEWER MANHOLE
- TOPO BOTTOM OF BANK
- TOPO EDGE OF GARDEN
- TOPO SHRUB
- TOPO TOP OF BANK
- TOPO TREE
- WATER HYDRANT
- WATER METER
- WATER STOP VALVE

REFER TO SHEET 1 FOR ALL RELEVANT SITE NOTES AND SERVICES CLASSIFICATIONS.



ver.	date	comment	surveyed	drawn	checked	pm	co-ordinate information	level information	scale (A1 original size)	page
A	18.05.2023	INITIAL ISSUE	K.R.	M.B.	D.K.	M.L.O.	CO-ORDINATE SYSTEM: MGA2020 55	DATUM: AHD	0 5.0 10.0 12.5m	13 OF 14
B	17.08.2023	EASEMENT NOTE CORRECTION	K.R.	M.L.	M.L.	M.L.	ORIGIN OF CO-ORDINATES: P.M.27126	CONTOUR INTERVAL: 0.2m	SCALE: 1:250 (FULL)	
							DATE OF SURVEY: 21/04/2023			



drawing title:  
DETAIL AND CONTOUR  
SURVEY UPON CROWN  
LAND LOTS

location: MORTON STREET,  
FORBES, 2871

council: FORBES SHIRE

dwg ref: 240380(2)-DET-001-B

client:



central coast office ph: (02) 4305 4300  
hunter office ph: (02) 4978 5100  
sydney office ph: (02) 8046 7411

www.adwjohanson.com.au

• project management • civil engineering • infrastructure • superintendency • economic analysis • social impact • town planning • surveying • development feasibility • visualisation • urban design

"Copyright Notice" This plan and the information it contains are copyright and remain the property of ADW Johnson Pty Ltd. ADW Johnson Pty Ltd grants to the client named on this plan a license to use the information hereon for the purpose for which we were engaged to perform the work. Use of the plan and information it contains for any other purpose is not permitted unless prior written approval has been obtained from ADW Johnson Pty Ltd.

working beyond expectations



Plotted By: Mathew London Plot Date: 17/08/2023 Cad File: N:\240380\240380(2) - Forbes\DWG\Survey\DET\240380(2)-DET-001-B.dwg  
This plan includes coloured information. If you have a black and white copy you do not have all of the information. This note is coloured red.

REFER TO SHEET 1 FOR ALL RELEVANT SITE NOTES AND SERVICES CLASSIFICATIONS.

ver.	date	comment	surveyed	drawn	checked	pm	co-ordinate information	level information	scale (A1 original size)	page
A	18.05.2023	INITIAL ISSUE	K.R.	M.B.	D.K.	M.L.O	CO-ORDINATE SYSTEM: MGA2020 55	DATUM: AHD	0 5.0 10.0 12.5m	14 OF 14
B	17.08.2023	EASEMENT NOTE CORRECTION	K.R.	M.L.	M.L.	M.L.	ORIGIN OF CO-ORDINATES: P.M.27126	ORIGIN OF LEVELS: P.M.27126	SCALE: 1:250 (FULL)	
							DATE OF SURVEY: 21/04/2023	CONTOUR INTERVAL: 0.2m		

• project management • civil engineering • infrastructure • superintendency • economic analysis • social impact • town planning • surveying • development feasibility • visualisation • urban design



drawing title:  
DETAIL AND CONTOUR  
SURVEY UPON CROWN  
LAND LOTS

location: MORTON STREET,  
FORBES, 2871

council: FORBES SHIRE

dwg ref: 240380(2)-DET-001-B

client:



central coast office ph: (02) 4305 4300  
hunter office ph: (02) 4978 5100  
sydney office ph: (02) 8046 7411

www.adwjohanson.com.au

working beyond expectations